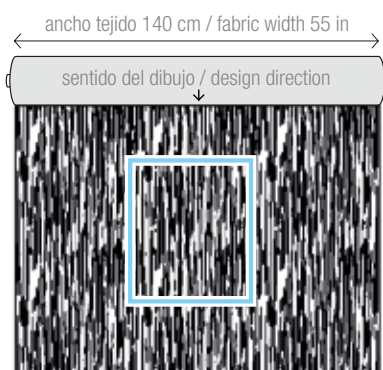


COCKTAIL COLLECTION



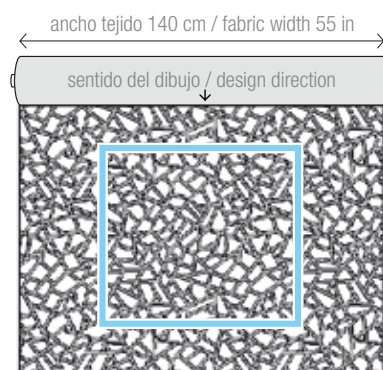
FROCA
www.froca.com

MOJITO



14,70 x 21,50 cm
RAPPORT

KAMIKAZE



37 x 33 cm
RAPPORT

BASILICO



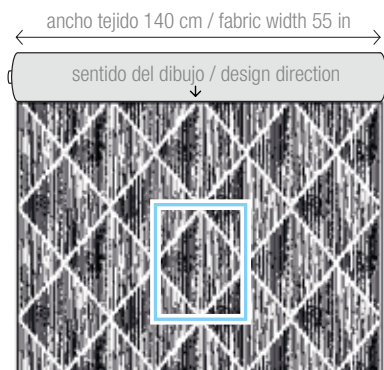
36,50 x 46 cm
RAPPORT

CAIPIRIÑA



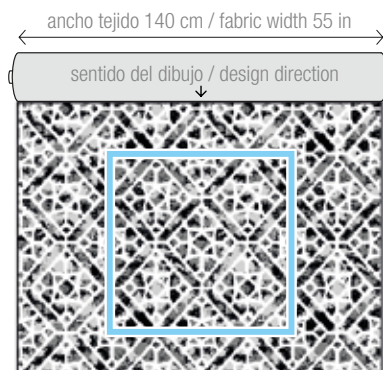
74 x 42 cm
RAPPORT

MARGARITA



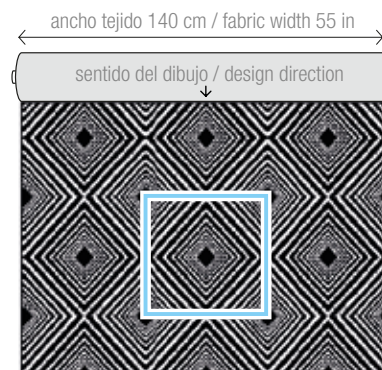
17,70 x 17,50 cm
RAPPORT

DAIQUIRI



35,50 x 34,50 cm
RAPPORT

BARRACUDA



36 x 34,50 cm
RAPPORT

Especificaciones técnicas

Technical specifications / Spécifications techniques



	MOJITO	KAMIKAZE	BASILICO	CAIPIRIÑA	MARGARITA	DAIQUIRI	BARRACUDA
COMPOSICIÓN Composition Composition	35% VISCOSE 34% COTTON 31% PES	46% VISCOSE 29% COTTON 25% PES	41% PES 41% VISCOSE 18% COTTON	59% PES 41% VISCOSE	61% PES 39% VISCOSE	47% PES 42% VISCOSE 11% COTTON	55% VISCOSE 45% PES
ANCHO Width Largeur	140 cm · 55,11 in.	140 cm · 55,11 in.	140 cm · 55,11 in.	140 cm · 55,11 in.	140 cm · 55,11 in.	140 cm · 55,11 in.	140 cm · 55,11 in.
PESO Weight Poids	487 g/m ² · 715 g/ml	614 g/m ² · 908 g/ml	503 g/m ² · 734 g/ml	541 g/m ² · 773 g/ml	556 g/m ² · 789 g/ml	631 g/m ² · 896 g/ml	448 g/m ² · 645 g/ml
RESISTENCIA A LA ABRASIÓN Abrasion resistance Résistance à l'abrasion (ISO 12947-2:2016)	> 30.000 ciclos / cycles / cycles	> 40.000 ciclos / cycles / cycles	> 90.000 ciclos / cycles / cycles	> 20.000 ciclos / cycles / cycles	> 30.000 ciclos / cycles / cycles	> 100.000 ciclos / cycles / cycles	> 40.000 ciclos / cycles / cycles

Instrucciones de lavado

Washing instructions / Instructions de lavage



· No lavar.
· Do not wash.
· Ne pas laver.



· No secar en secadora.
· Do not tumble dry.
· Ne pas sécher en machine.



· Planchar a temperatura media.
· Iron medium heat.
· Repasser à chaleur modérée.



· Lavado en seco, ropa delicada.
· Dry cleaning.
· Nettoyage à sec.



· No usar lejía.
· Do not use bleach.
· Ne pas utiliser eau de javel.